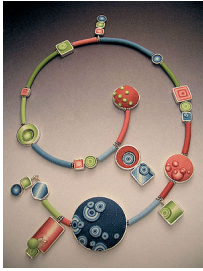


Color Mixing

Written by Administrator
Friday, 12 March 2010 14:27



Use our

[color mixing guide](#) to help you create any color. Kato Polyclay bars a specially



[Mixing translucent and metallic colors](#) is great fun and can result in stunning effects.



[Kato Concentrates](#) are special blocks of very high pigment clay. They are used to achieve strong tints